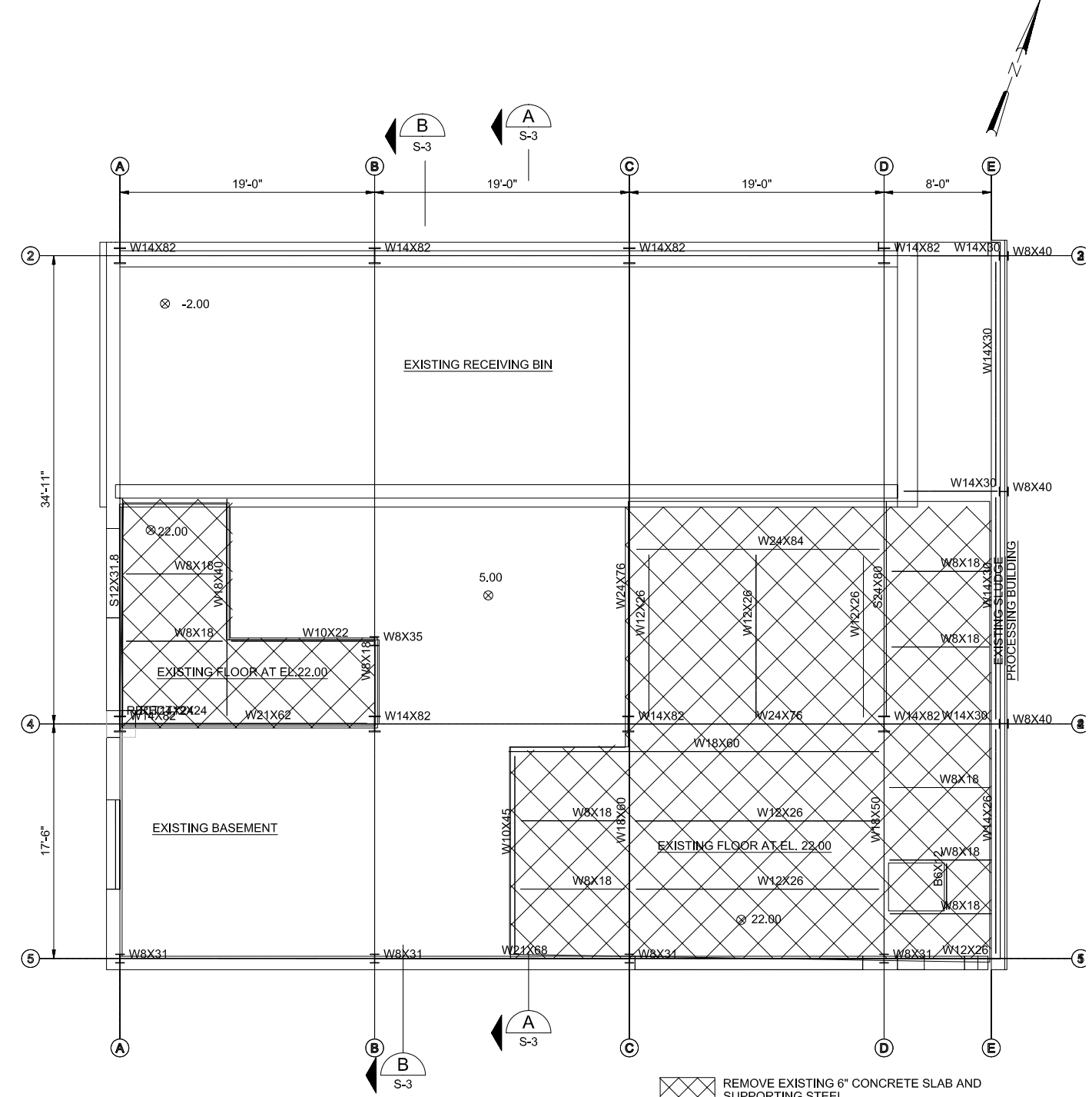


FOUNDATION PLAN
3/16"=1'-0"



FLOOR AT EL. 22.00 PLAN
3/16"=1'-0"

REMOVE EXISTING 6" CONCRETE SLAB AND SUPPORTING STEEL

NOTE: FOR ALL NEW QUANTITIES AND DEMOLITION QUANTITIES, SEE STRUCTURAL TECHNICAL MEMORANDUM

STRUCTURAL/DEMOLITION

PLANS