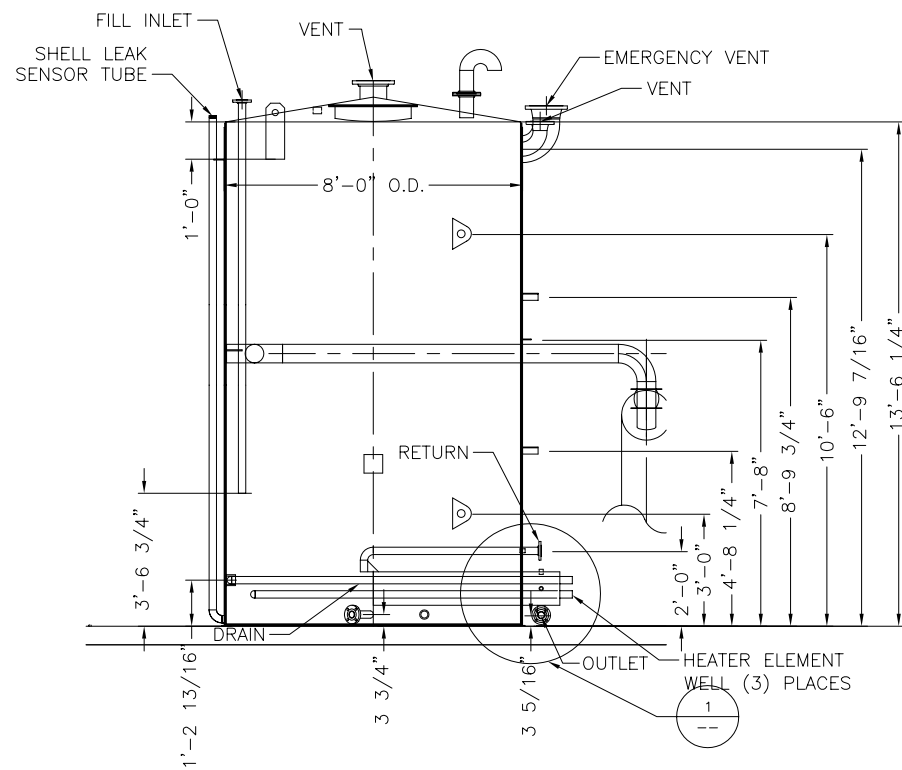
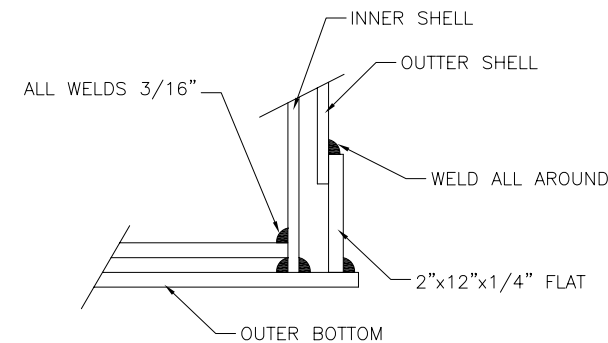


PLAN VIEW



ELEVATION VIEW



1 DOUBLE WALL CONSTRUCTION DETAIL  
1"=1'-0"

NOTES:

- MATERIAL OF CONSTRUCTION:
 

SHELL	ASTM A240	3/4" min
BOTTOM	ASTM A240	1/4" min
PLATE	316L	
NOZZLE	RFWN	
PIPING	A53 SEAMLESS	
FLANGES	316L	
GASKETS	SYNTHETIC ELASTOMER	200°F MIN
- VESSEL SHALL BE DESIGNED FOR MIN 5,000-GALLON STORAGE.
- FINISH REQUIREMENTS:
 

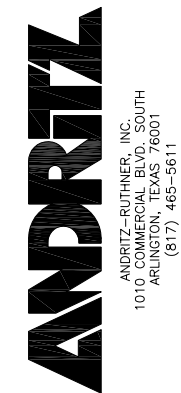
EXTERIOR: 1 COAT SHERWIN WILLIAMS RUST INHIBITOR  
1.5 MILS SHERWIN WILLIAMS GRAY PRIMER  
1.5-2.25 MILS SHERWIN WILLIAMS ACRYLIC ENAMAL (F79W38)

BOTTOM: OVERCOAT WITH ASPHALT
- EXTERNAL INSULATION SHALL BE FIBERGLASS WITH A MAXIMUM K-FACTOR OF 0.6 AT 600°F. ALL INSULATION SHALL BE PROTECTED WITH A STAINLESS STEEL OR ALUMINUM JACKET WITH A MINIMUM THICKNESS OF 0.018 INCH. INSULATION TO BE IN AREA OF TANK HEATERS ONLY.
- MANUFACTURER SHALL TAG ALL COMPONENTS BEFORE SHIPPING. PROVIDE ONE EXTRA COPY OF THE INSTALLATION INSTRUCTIONS SHALL BE INCLUDED IN SHIPMENT.

EQUIPMENT SPECIFICATIONS

MANUFACTURER	PALMER
CAPACITY	5,000 GALLONS
FULL TANK WEIGHT	42,000 LBS
HEATER	8 KW EACH (3)
MANUFACTURER	CHLOROMAX
PUMP	SEPCO
MOTOR	2 HP

TAG EQP'T 60.620.100



DATE	2/6/06	DATE	01/24/07
DRAWN BY: JEN		DATE	06/05/06
CHECKED BY:		REV	0
APPROVED BY:		REV	1
SCALE: 3/8"=1'-0"		FILE	152462000
SIZE		PROJECT NUMBER	1524
		TITLE	PELLET OILING SYSTEM
		TITLE	GENERAL ARRANGEMENT
		PROJECT NUMBER	1524
		DRAWING NUMBER	620-00
		REVISION	1
		SHEET	1 OF 1

THIS DRAWING IS COPY RIGHTED  
THIS DRAWING IS A TRADE SECRET AND ONLY ENTRUSTED TO THE RECEIVER FOR HIS PERSONAL USE. WITHOUT THE SIGNED WRITTEN CONSENT OF ANDRITZ-RUTHNER, INC., IT MUST NOT BE COPIED NOR MADE AVAILABLE TO THIRD PARTIES. INCLUDING COMPETITORS, NOR MADE ACCESSIBLE TO SUCH PARTIES. ANY ILLEGAL USE BY THE RECEIVER OR THIRD PARTIES FOR WHICH HE IS RESPONSIBLE CAN CONSTITUTE A CAUSE FOR LEGAL ACTION. THIS DRAWING MUST BE RETURNED ON REQUEST OF THE COMPANY.

