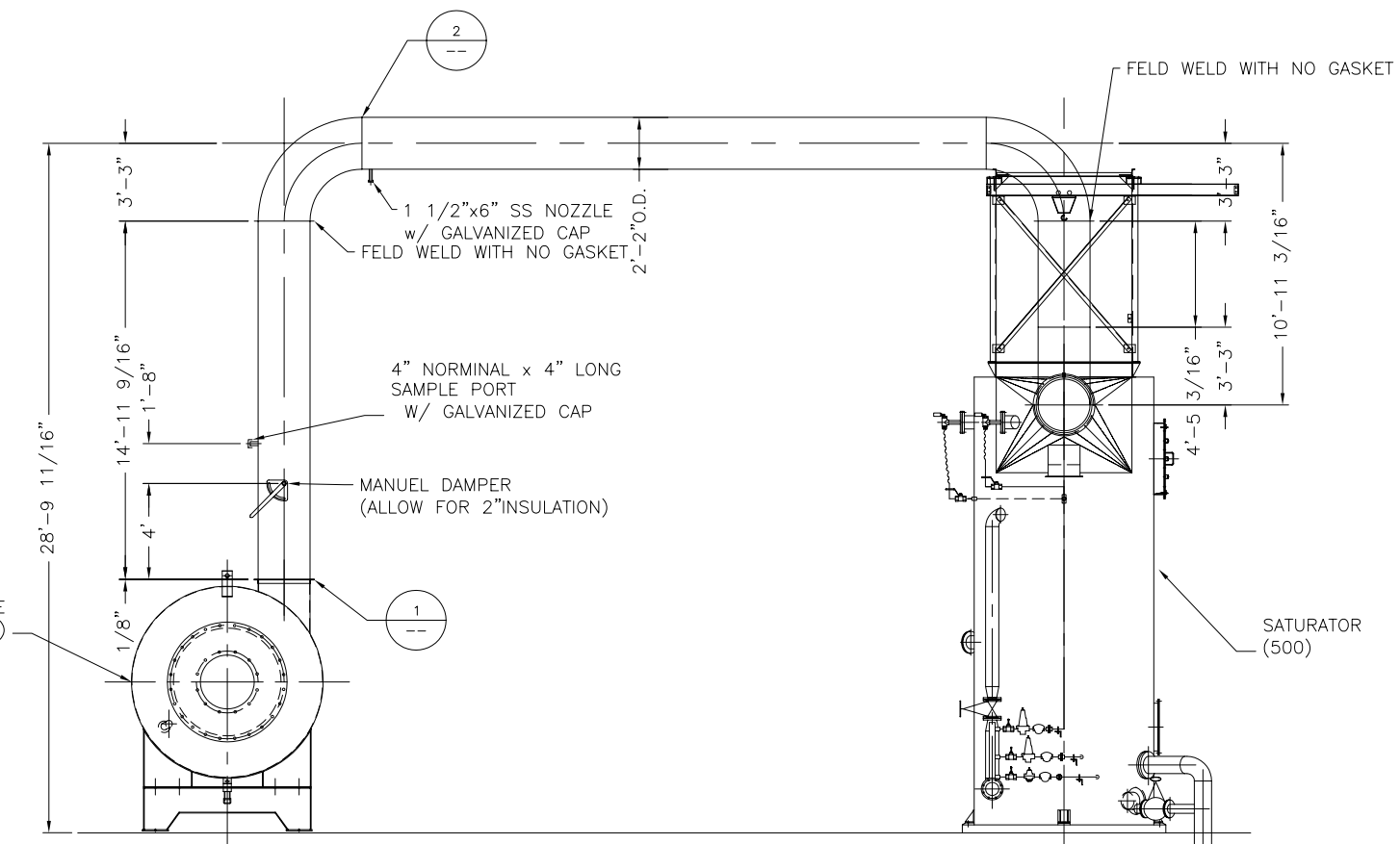
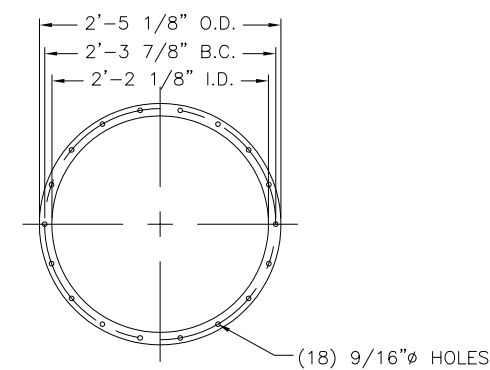


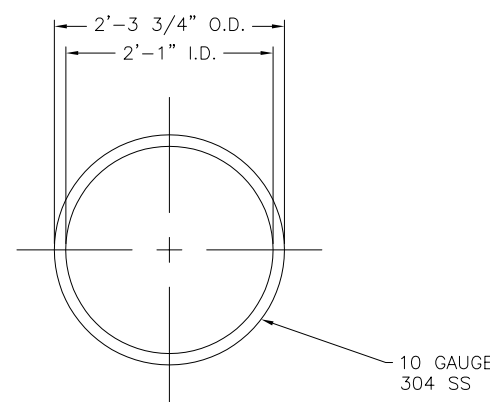
PLAN VIEW



1 FLANGE DETAIL
1"=1'-0"

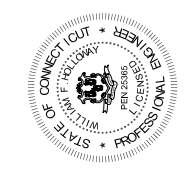


2 ORIFICE PLATE DETAIL
1"=1'-0"



NOTES:

1. FOR GENERAL PROCESS DUCT FABRICATION NOTES SEE DRAWING 1524-560-20.
2. DESIGN OPERATING PRESSURE FOR THIS DUCT SECTION IS 30" WG NEGATIVE.
3. MAXIMUM REINFORCEMENT SPACING ON THIS DUCT SECTION IS 10'-0".
4. HANDLE ON MANUAL DAMPER MUST STAND OFF DUCT SURFACE 5" TO CLEAR INSULATION & JACKET.
5. TEST PORT FLANGE FACES MUST STAND OFF DUCT SURFACE 5" TO CLEAR INSULATION AND JACKET.



DATE: 04/20/06	DATE: 06/05/06
DRAWN BY: JEN	FOR FINAL REVIEW/BUILDING PERMIT
CHECKED BY:	REVISION
APPROVED BY:	REV
SCALE: 1/4"=1'-0"	0
FILE: 152456040	06/05/06
PROJECT NUMBER: DDS40	DATE

JOB NAME: CITY OF STAMFORD CONNECTICUT SOLIDS DRYING PROJECT	TITLE: GENERAL ARRANGMENT DUCT SATURATOR(500) TO FURNACE(001)
PROJECT NUMBER: 1524	DRAWING NUMBER: 560-40
	REV: 0
SHEET 1 OF 1	

THIS DRAWING IS A TRADE SECRET AND ONLY ENTRUSTED TO THE RECEIVER FOR HIS PERSONAL USE. WITHOUT THE SIGNED WRITTEN CONSENT OF ANDRITZ-RUTHNER, INC., IT MUST NOT BE COPIED NOR MADE AVAILABLE TO THIRD PARTIES, INCLUDING COMPETITORS, NOR MADE ACCESSIBLE TO SUCH PARTIES. ANY ILLEGAL USE BY THE RECEIVER OR THIRD PARTIES FOR WHICH HE IS RESPONSIBLE CAN CONSTITUTE A CAUSE FOR LEGAL ACTION. THIS DRAWING MUST BE RETURNED ON REQUEST OF THE COMPANY.

