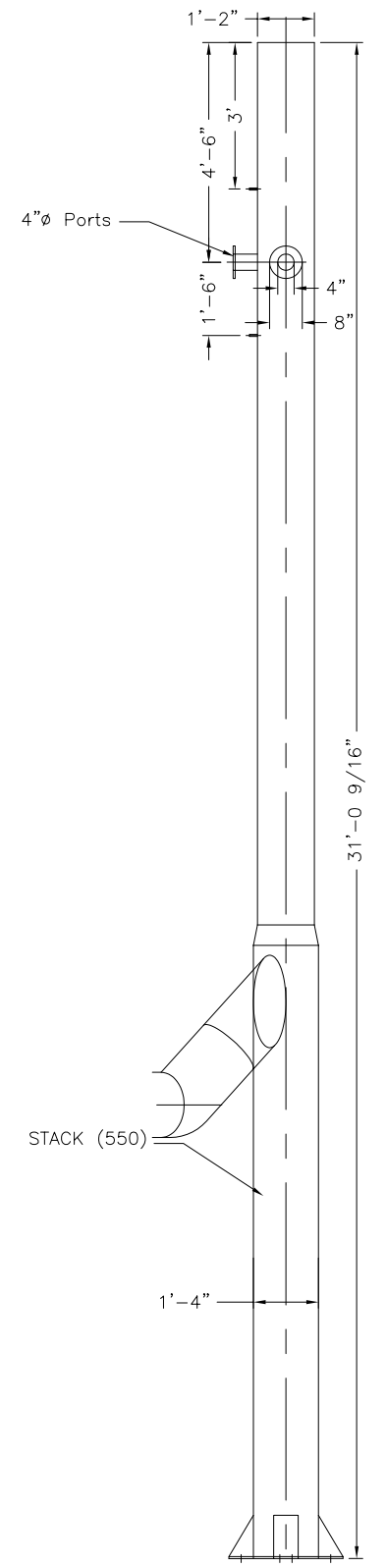
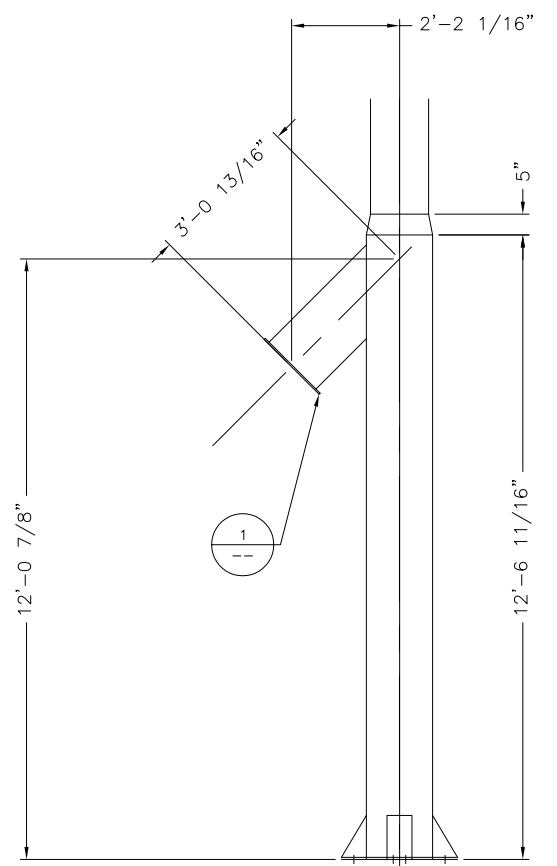


ANCHORS TO BE  
(8)  $\phi$  3/4" ASTM A325

PLAN VIEW



ELEVATION VIEW

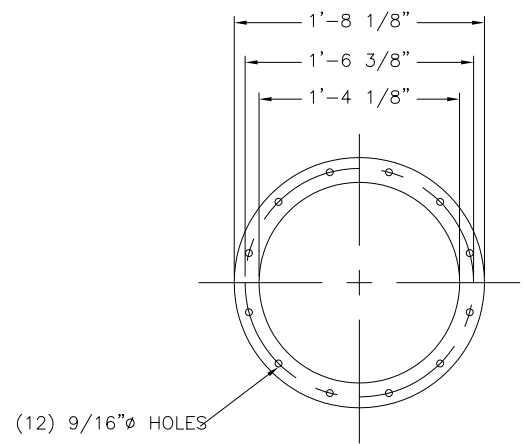


A SECTION  
3/8"=1'-0"

NOTES:

1. STACK SHALL BE FABRICATED OF MINIMUM 1/8" 304 STAINLESS STEEL PLATE
2. STACK TO BE COMPLETE WITH STAINLESS STEEL HARDWARE, 1/8" THICK GASKETS, AND REINFORCING
3. STACK SHALL INCLUDE 2 EACH 4" DIAMETER STAINLESS STEEL SAMPLE PORTS WITH BLIND FLANGES 10 GA.
4. ONLY TOP 10' EXPOSED TP WIND
5. NO LOAD TO BUILDING PERMITTED
6. PROVIDE DRAIN IN BOTTOM
7. STACK SUPPLIER SHALL SUBMIT DRAWINGS TO ANDRITZ FOR APPROVAL

TAG EQP'T 40.550.000



1 FLANGE DETAIL  
1 1/2"=1'-0"



DATE:	12/28/05
DRAWN BY:	JEN
CHECKED BY:	
APPROVED BY:	
SCALE:	1/2"=1'-0"
FILE:	1522455000
SIZE:	
PROJECT NUMBER:	1524
DRAWING NUMBER:	550-00
SHEET:	1 OF 1
DATE:	06/05/06
REVISION:	1 REVISED STACK LAYOUT
DATE:	06/05/06
REVISION:	0 FOR FINAL REVIEW/BUILDING PERMIT

CITY OF STAMFORD CONNECTICUT  
SOLIDS DRYING PROJECT  
STACK (550)  
GENERAL ARRANGEMENT

THIS DRAWING IS COPY RIGHTED  
FOR HIS PERSONAL USE WITHOUT THE SIGNED WRITTEN CONSENT OF ANDRITZ-RUTHNER, INC., IT MUST NOT BE COPIED NOR MADE AVAILABLE TO THIRD PARTIES, INCLUDING COMPETITORS, NOR MADE ACCESSIBLE TO SUCH PARTIES. ANY ILLEGAL USE BY THE RECEIVER OR THIRD PARTIES FOR WHICH HE IS RESPONSIBLE CAN CONSTITUTE A CAUSE FOR LEGAL ACTION. THIS DRAWING MUST BE RETURNED ON REQUEST OF THE COMPANY.

