

INSTALLATION NOTES:

1. EQUIPMENT CONNECTION JOINTS TO BE GASKETED.
2. GASKETS & HARDWARE PROVIDED BY ANDRITZ.
3. CONTRACTOR TO PROVIDE FILED DIMENSIONS REQUIRED FOR CHUTES AFTER EQUIPMENT IS INSTALLED.

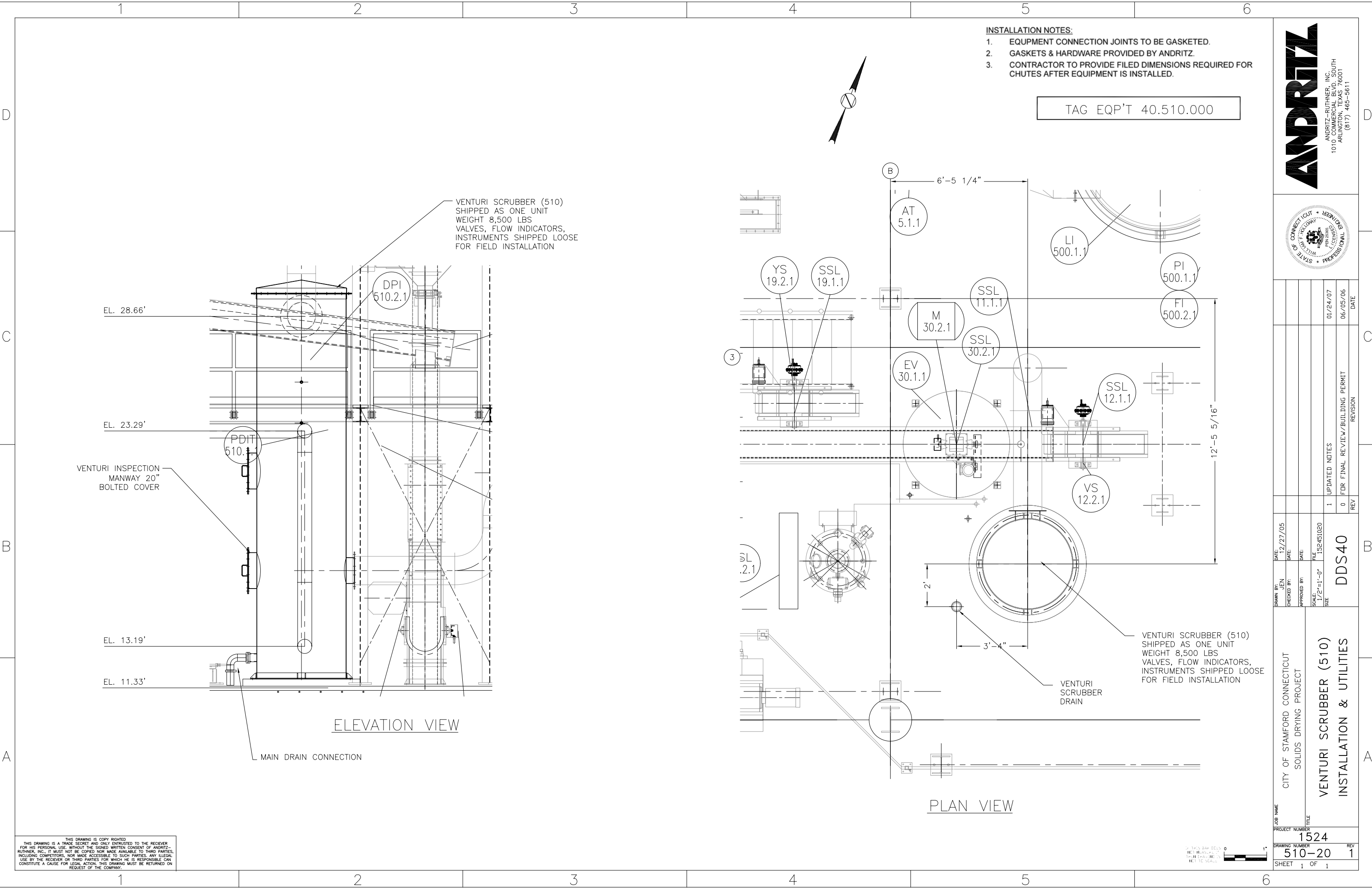
TAG EQP'T 40.510.000



NO.	DATE	REVISION
1	01/24/07	UPDATED NOTES
0	06/05/06	FOR FINAL REVIEW/BUILDING PERMIT

DATE:	12/27/05
DRAWN BY:	JEN
CHECKED BY:	
APPROVED BY:	
SCALE:	1/2"=1'-0"
FILE:	152451020
SIZE:	

JOB NAME:	CITY OF STAMFORD CONNECTICUT SOLIDS DRYING PROJECT
TITLE:	VENTURI SCRUBBER (510) INSTALLATION & UTILITIES
PROJECT NUMBER:	1524
DRAWING NUMBER:	510-20
REVISION:	1
SHEET:	1 OF 1



VENTURI SCRUBBER (510)
SHIPPED AS ONE UNIT
WEIGHT 8,500 LBS
VALVES, FLOW INDICATORS,
INSTRUMENTS SHIPPED LOOSE
FOR FIELD INSTALLATION

VENTURI SCRUBBER (510)
SHIPPED AS ONE UNIT
WEIGHT 8,500 LBS
VALVES, FLOW INDICATORS,
INSTRUMENTS SHIPPED LOOSE
FOR FIELD INSTALLATION

VENTURI INSPECTION
MANWAY 20"
BOLTED COVER

VENTURI
SCRUBBER
DRAIN

ELEVATION VIEW

PLAN VIEW

MAIN DRAIN CONNECTION

THIS DRAWING IS COPY RIGHTED
FOR HIS PERSONAL USE WITHOUT THE SIGNED WRITTEN CONSENT OF ANDRITZ-RUTHNER, INC. IT MUST NOT BE COPIED NOR MADE AVAILABLE TO THIRD PARTIES. INCLUDING COMPETITORS, NOR MADE ACCESSIBLE TO SUCH PARTIES. ANY ILLEGAL USE BY THE RECEIVER OR THIRD PARTIES FOR WHICH HE IS RESPONSIBLE CAN CONSTITUTE A CAUSE FOR LEGAL ACTION. THIS DRAWING MUST BE RETURNED ON REQUEST OF THE COMPANY.

