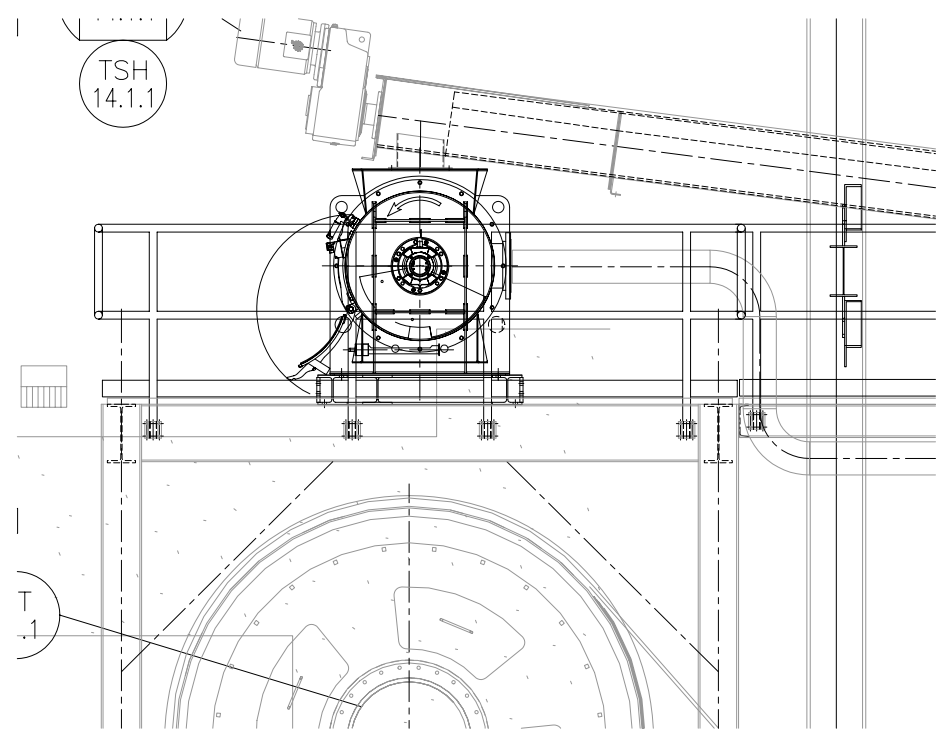
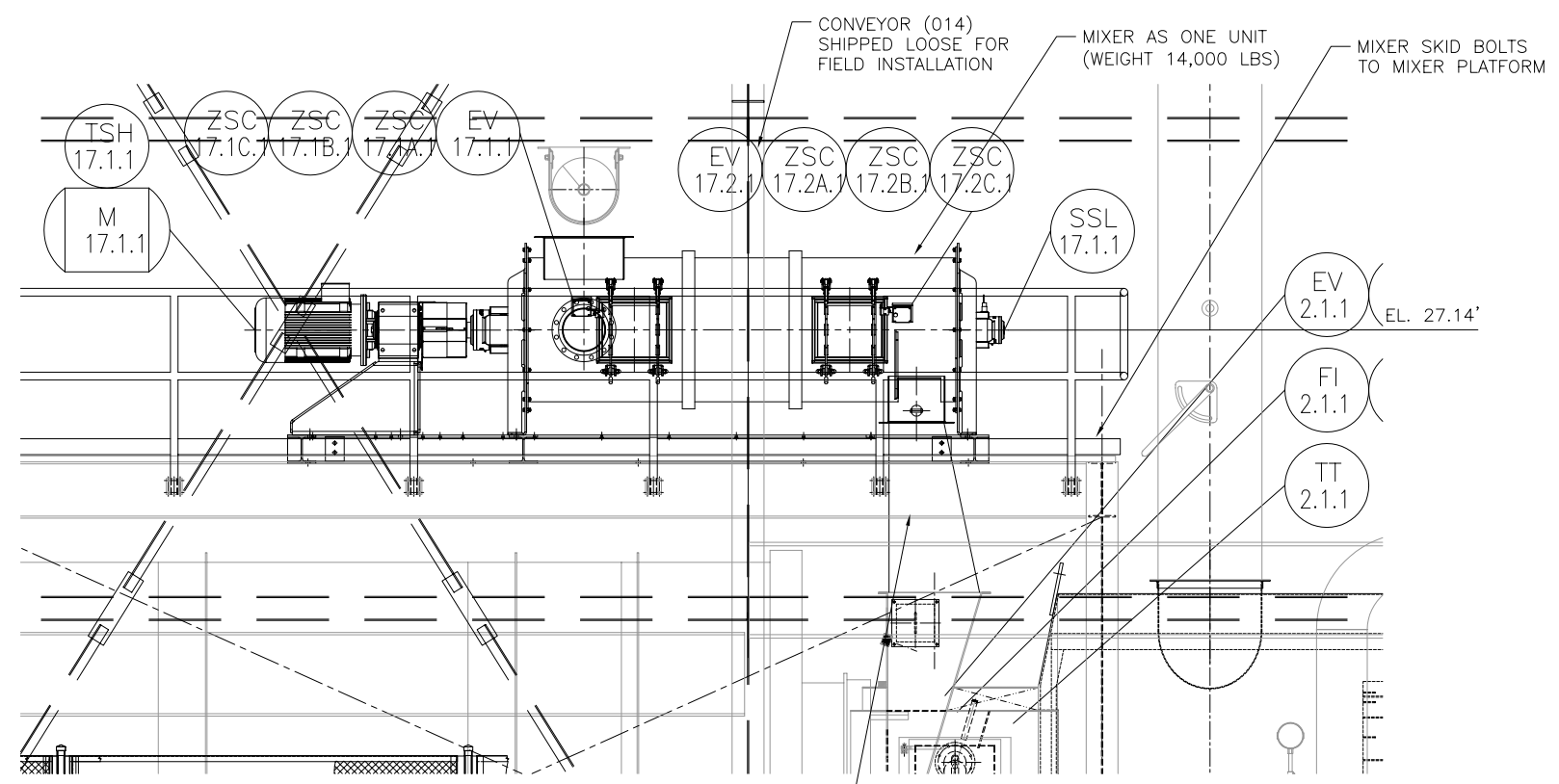


- INSTALLATION NOTES:**
- EQUIPMENT CONNECTION JOINTS TO BE GASKETED.
  - GASKETS & HARDWARE PROVIDED BY ANDRITZ.
  - CONTRACTOR TO PROVIDE FILED DIMENSIONS REQUIRED FOR CHUTES AFTER EQUIPMENT IS INSTALLED.

TAG EQP'T 40.017.000



THIS DRAWING IS COPY RIGHTED  
 FOR HIS PERSONAL USE WITHOUT THE SIGNED WRITTEN CONSENT OF ANDRITZ-  
 RUTHNER, INC., IT MUST NOT BE COPIED NOR MADE AVAILABLE TO THIRD PARTIES.  
 INCLUDING COMPETITORS, NOR MADE ACCESSIBLE TO SUCH PARTIES. ANY ILLEGAL  
 USE BY THE RECEIVER OR THIRD PARTIES FOR WHICH HE IS RESPONSIBLE CAN  
 CONSTITUTE A CAUSE FOR LEGAL ACTION. THIS DRAWING MUST BE RETURNED ON  
 REQUEST OF THE COMPANY.

CHUTE BY ANDRITZ. DIMENSIONS  
 REQUIRED FROM CONTRACTOR  
 AFTER ERECTION OF EQUIPMENT



**ANDRITZ**  
 ANDRITZ-RUTHNER, INC.  
 1010 COMMERCIAL BLVD. SOUTH  
 ARLINGTON, TEXAS 76001  
 (817) 465-5611

STATE OF CONNECTICUT PROFESSIONAL ENGINEER  
 WILLIAM L. GIBSON  
 PEN 2686

DATE:	12/22/05
DRAWN BY:	JEN
CHECKED BY:	
APPROVED BY:	
SCALE:	1/2" = 1'-0"
FILE:	152401720
SIZE:	

PROJECT NUMBER: 1524  
 DRAWING NUMBER: 017-20  
 SHEET 1 OF 1

CITY OF STAMFORD CONNECTICUT  
 SOLIDS DRYING PROJECT

CONTINUOUS MIXER (017)  
 INSTALLATION & UTILITIES

REV	0	DATE	06/05/06
REV	1	DATE	01/17/07

1 UPDATED LAYOUT  
 0 FOR FINAL REVIEW/BUILDING PERMIT