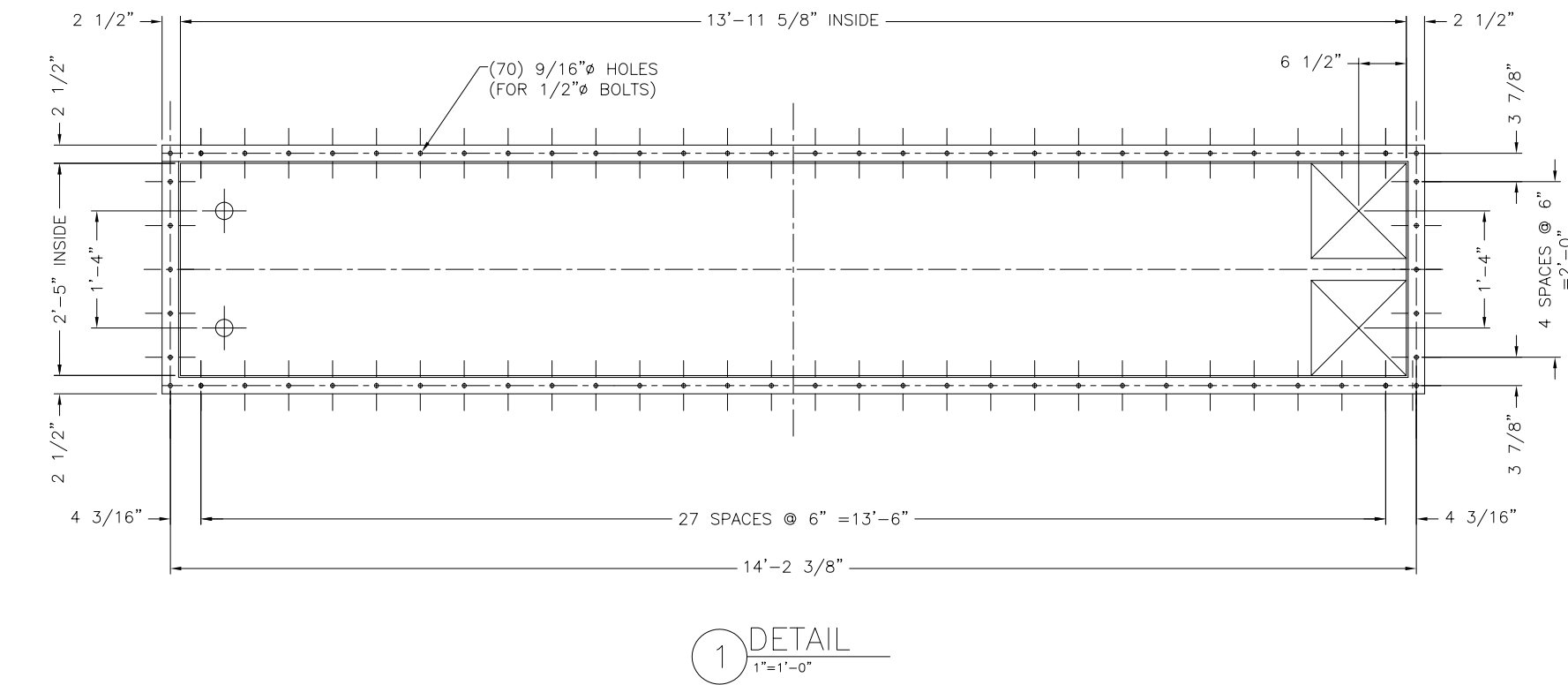


NOTES:

1. ALL SCREW CONVEYORS SHALL BE DESIGNED IN STRICT ACCORDANCE WITH CEMA 350
2. DIMENSIONAL STANDARDS SHALL COMPLY WITH CEMA 300 STANDARDS
3. CONVEYOR MANUFACTURER IS RESPONSIBLE FOR FINAL CONVEYOR SIZING AND HORSEPOWER DETERMINATION
4. CONVEYOR RPM SHALL NOT EXCEED 75% OF CEMA 350 TABLE 2-3 RECOMMENDATION
5. CONVEYOR TROUGH SHALL BE FORMED FROM 1/4-INCH 304 SS STEEL PLATE WITH 3/8" THICK U.H.M.W. LINER
6. THERE SHALL BE NO FLIGHTING OVER DISCHARGE OPENING
7. CONVEYOR COVERS SHALL BE MINIMUM 1/8" 304-SS. COVER SHALL BE FORMED FLANGE TYPE WITH COVER BOLTS ON MAXIMUM 6-INCH CENTERS
8. CONVEYOR END PLATES SHALL BE MINIMUM 1/4" THICK 304 SS PLATE OR HEAVIER AS LISTED IN CEMA 300. PROVIDE GLAND TYPE PACKING AT TAIL END OF CONVEYOR
9. CONVEYOR DRIVE SHALL BE SHAFT MOUNTED GEARMOTOR AGMA CLASS II WITH NEMA FRAME, PREMIUM EFFICIENCY, 1.15 SERVICE FACTOR, T.E.F.C. MOTOR. GEARMOTOR SHALL BE PRE-FILLED WITH OIL PRIOR TO SHIPMENT.
10. ALL BEARINGS, PACKINGS, DRIVES, MOTORS, AND ACCESSORIES SHALL BE FINISHED PAINTED WITH POLYURETHANE ENAMEL TO MATCH
11. PROVIDE MILLTRONICS ZERO SPEED SWITCH MODEL MFA-4P. MOUNT ZERO SPEED WITH STAINLESS STEEL BRACKET

EQUIPMENT SPECIFICATIONS

MANUFACTURER ANDRITZ
 MODEL 12" DOUBLE SHAFTLESS SCREW
 LIVE BOTTOM
 INCLINATION 0 DEGREES
 MOTOR (2) 1 1/2HP 460/3/60 TEFC
 CAPACITY 240 FT3/HOUR
 SPEED 3 RPM



TAG EQP'T 40.016.000



DATE	01/17/07	DATE	06/05/06
REVISION	0	REVISION	1
DESCRIPTION	FOR FINAL REVIEW/BUILDING PERMIT	DESCRIPTION	UPDATE LAYOUT

DATE	6/9/06
FILE	152401600
SCALE	1"=1'-0"
SIZE	

JOB NAME	CITY OF STAMFORD CONNECTICUT SOLIDS DRYING PROJECT
TITLE	LIVE BOTTOM (016) GENERAL ARRANGEMENT
PROJECT NUMBER	1524
DRAWING NUMBER	016-00
SHEET	1 OF 1

THIS DRAWING IS COPY RIGHTED. THIS DRAWING IS A TRADE SECRET AND ONLY ENTRUSTED TO THE RECEIVER FOR HIS PERSONAL USE. WITHOUT THE SIGNED WRITTEN CONSENT OF ANDRITZ-RUTHNER, INC., IT MUST NOT BE COPIED NOR MADE AVAILABLE TO THIRD PARTIES, INCLUDING COMPETITORS, NOR MADE ACCESSIBLE TO SUCH PARTIES. ANY ILLEGAL USE BY THE RECEIVER OR THIRD PARTIES FOR WHICH HE IS RESPONSIBLE CAN CONSTITUTE A CAUSE FOR LEGAL ACTION. THIS DRAWING MUST BE RETURNED ON REQUEST OF THE COMPANY.

