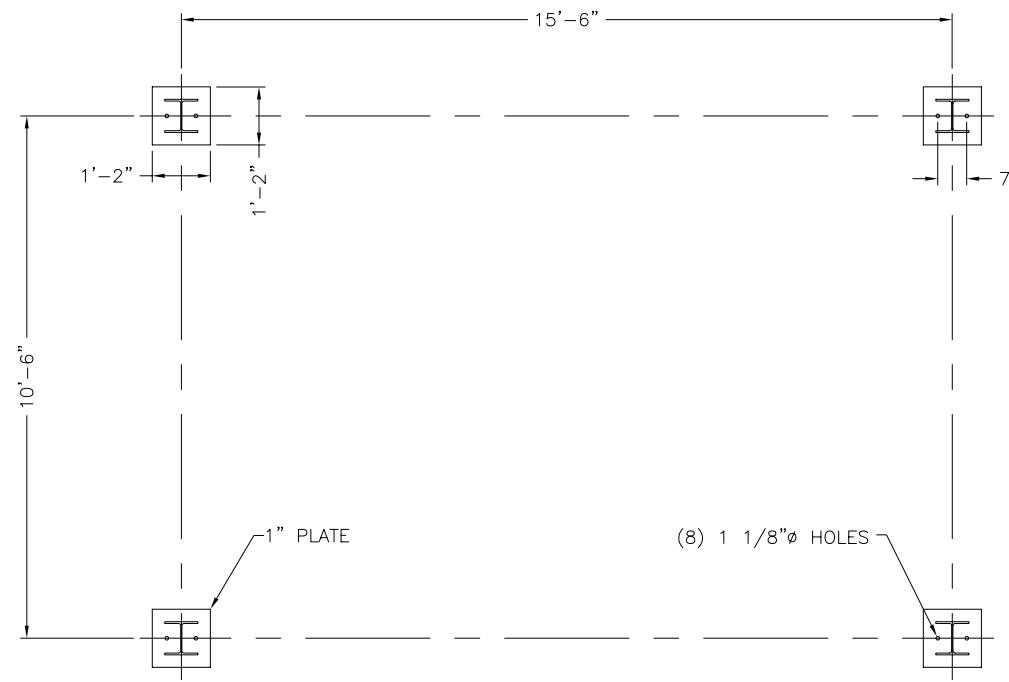
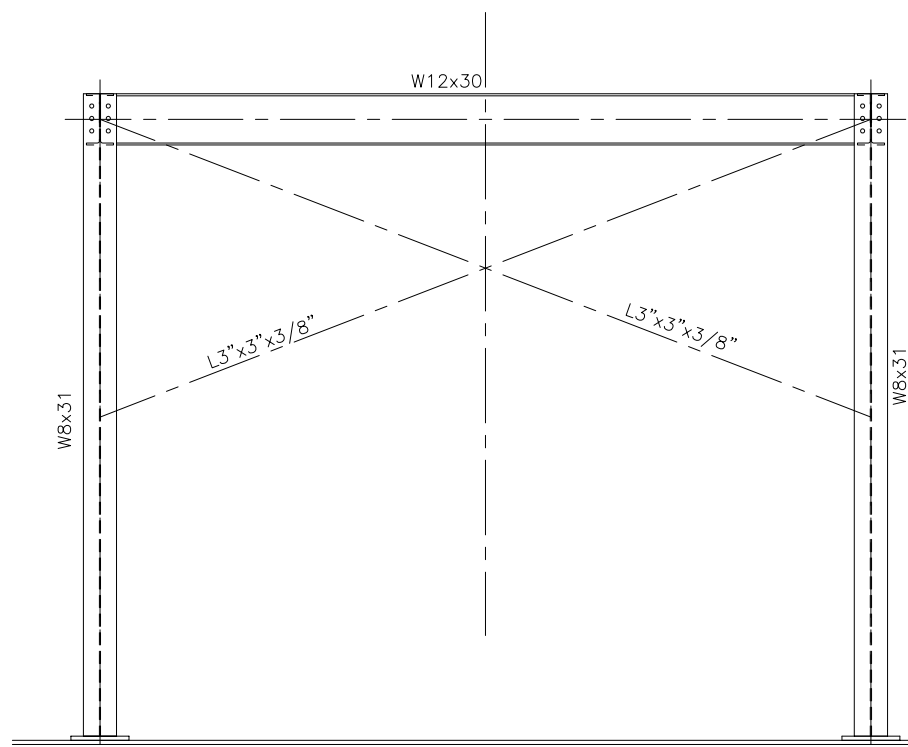


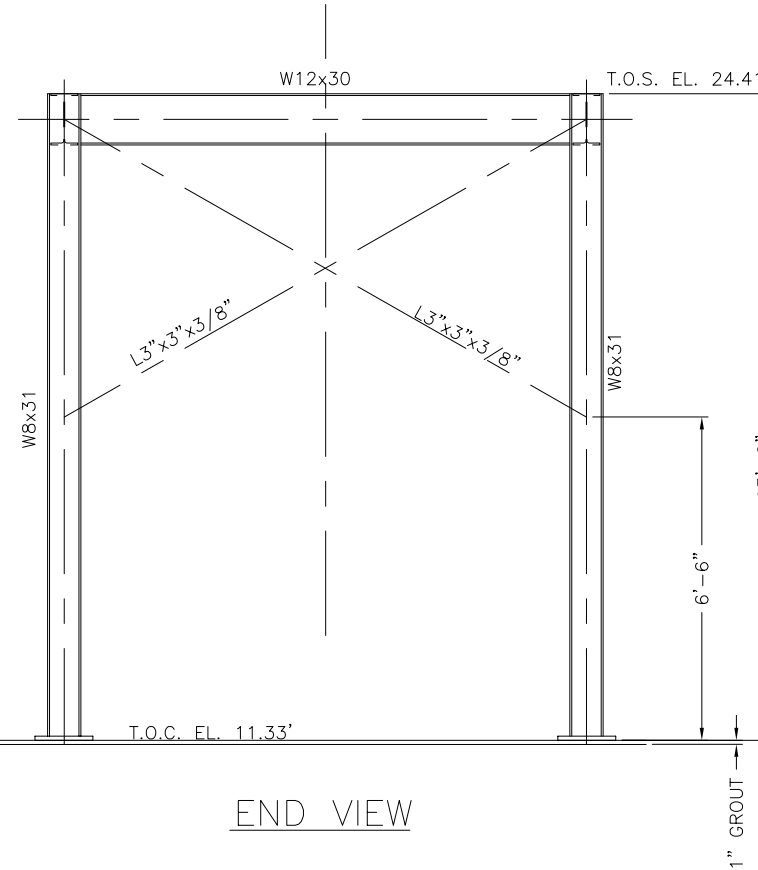
FRAMING PLAN



BASE PLATE LAYOUT



ELEVATION VIEW



END VIEW

NOTES:

- MATERIAL OF CONSTRUCTION:**
 - GRATING ALUMINUM 3/16" x 1 1/2"
 - STAIR TREADS ALUMINUM
 - HANDRAIL ALUMINUM 1 1/2" SCH. 40
 - POSTS ALUMINUM 1 1/2" SCH. 40
 - FASTENERS AND SADDLE CLIPS STAINLESS STEEL
- ALL STRUCTURAL STEEL SHALL BE ASTM A992 WHERE AVAILABLE, BALANCE OF STEEL SHALL BE ASTM A36.
- HARDWARE TO BE ASTM A325 UNLESS OTHERWISE NOTED.
- WELDING PER AWS STANDARDS. NO GAS BUBBLES, REMOVE SCALE, CLEAN & DRESS WELDS AS REQUIRED.
- ALL PLATFORMS, STAIRS, AND GUARDRAILS TO BE FABRICATED PER OSHA STANDARDS.
- FINISH REQUIREMENTS:**
 - STRUCTURAL STEEL TO BE GALVANIZED
 - HANDRAILS TO HAVE ANODIZED FINISH
- FABRICATOR TO SUPPLY ALL FASTNERS INCLUDING BOLTS, NUTS, FLAT AND LOCK WASHERS, GRATING SADDLE CLIPS AND ALL OTHER MISC. HARDWARE.
- STEEL FABRICATOR TO TAG ALL COMPONENTS (BEFORE SHIPPING) FOR ASSEMBLY. PROVIDE ONE EXTRA COPY OF INSTALLATION INSTRUCTIONS WITH SHIPMENT.
- ALL BASE PLATES SHALL BE 1" THICK UNLESS NOTED OTHERWISE.



DATE	REVISION
06/05/06	FOR FINAL REVIEW/BUILDING PERMIT
0	REV

DATE: 05/31/06	FILE: 152401510
CHECKED BY: JEN	SCALE: 1/2" = 1'-0"
APPROVED BY:	SIZE:
DSD40	

JOB NAME: CITY OF STAMFORD CONNECTICUT SOLIDS DRYING PROJECT	TITLE: WET MATERIAL BIN (015) STEEL LAYOUT
PROJECT NUMBER: 1524	DRAWING NUMBER: 015-10
SHEET 1 OF 1	

THIS DRAWING IS COPY RIGHTED. THIS DRAWING IS A TRADE SECRET AND ONLY ENTRUSTED TO THE RECEIVER FOR HIS PERSONAL USE. WITHOUT THE SIGNED WRITTEN CONSENT OF ANDRITZ-RUTHNER, INC., IT MUST NOT BE COPIED NOR MADE AVAILABLE TO THIRD PARTIES, INCLUDING COMPETITORS, NOR MADE ACCESSIBLE TO SUCH PARTIES. ANY ILLEGAL USE BY THE RECEIVER OR THIRD PARTIES FOR WHICH HE IS RESPONSIBLE CAN CONSTITUTE A CAUSE FOR LEGAL ACTION. THIS DRAWING MUST BE RETURNED ON REQUEST OF THE COMPANY.

