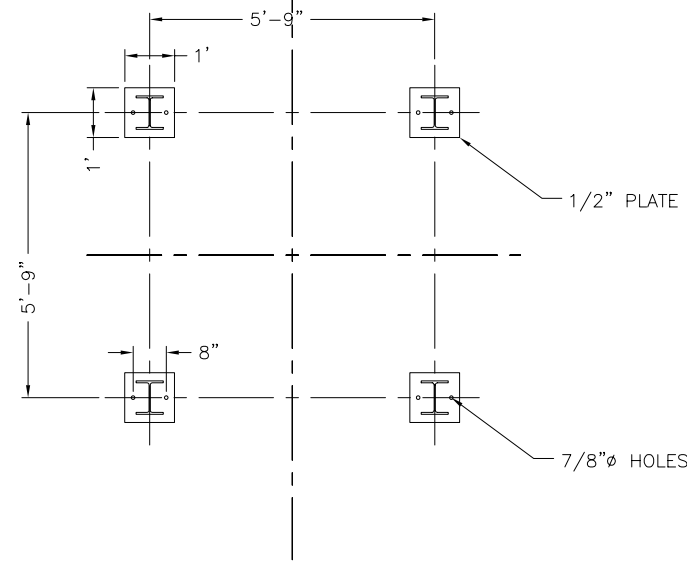
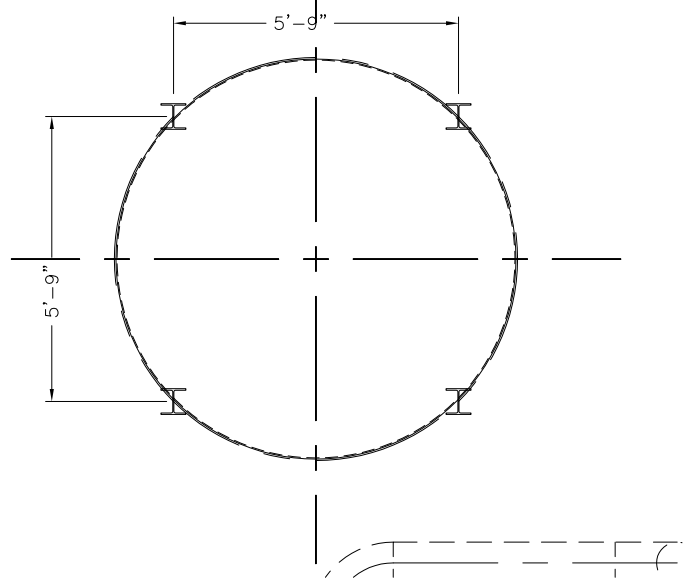


**NOTES:**

1. FOR GENERAL NOTES, SEE DWG 1524-013-00.

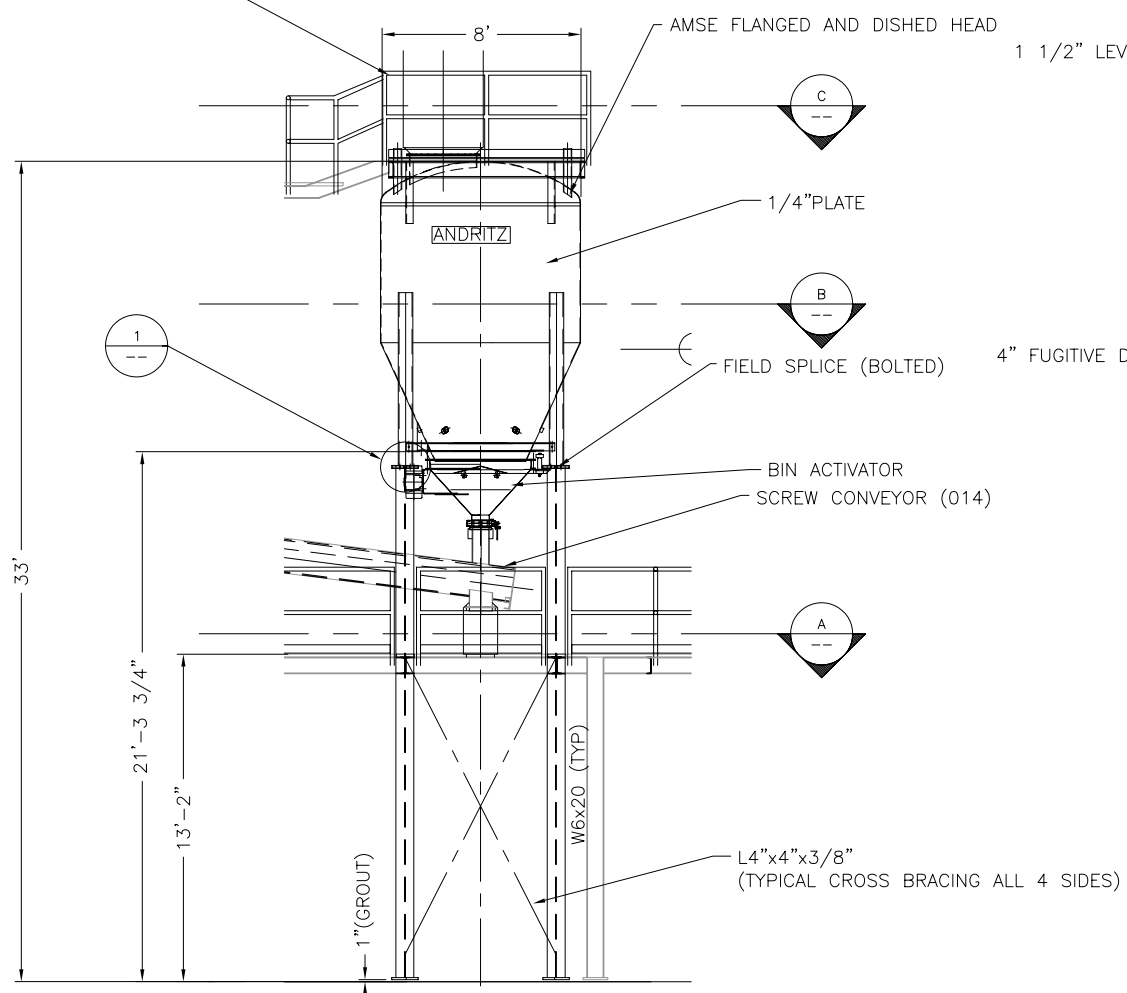


**A SECTION**  
1/2"=1'-0"

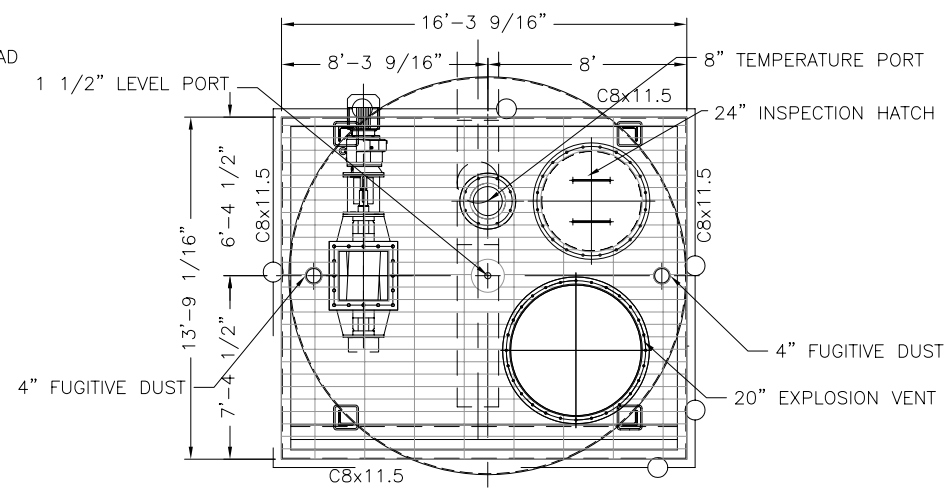


**B SECTION**  
1/2"=1'-0"

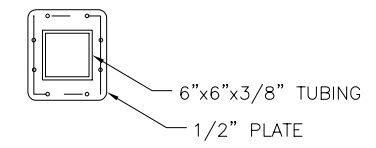
FOR PLATFORM INFORMATION  
SEE DWG# 1220-013-10



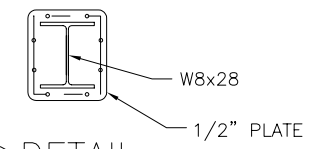
**ELEVATION VIEW**  
SCALE: 1/4"=1'-0"



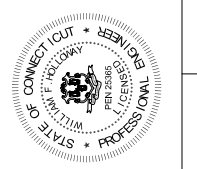
**C SECTION**  
1/2"=1'-0"



**1 DETAIL**  
1"=1'-0"



THIS DRAWING IS COPY RIGHTED.  
THIS DRAWING IS A TRADE SECRET AND ONLY ENTRUSTED TO THE RECEIVER FOR HIS PERSONAL USE. WITHOUT THE SIGNED WRITTEN CONSENT OF ANDRITZ-RUTHNER, INC., IT MUST NOT BE COPIED, NOR MADE AVAILABLE TO THIRD PARTIES, INCLUDING COMPETITORS, NOR MADE ACCESSIBLE TO SUCH PARTIES. ANY ILLEGAL USE BY THE RECEIVER OR THIRD PARTIES FOR WHICH HE IS RESPONSIBLE CAN CONSTITUTE A CAUSE FOR LEGAL ACTION. THIS DRAWING MUST BE RETURNED ON REQUEST OF THE COMPANY.



DATE:	05/31/06	
DRAWN BY:	JEN	
CHECKED BY:		
APPROVED BY:		
SCALE:	NTS	
FILE:	152401310	
SIZE:		
REV	0	FOR FINAL REVIEW/BUILDING PERMIT
REVISION		
DATE	06/05/06	

JOB NAME	CITY OF STAMFORD CONNECTICUT SOLIDS DRYING PROJECT
TITLE	RECYCLE BIN (013) TOP PLATFORM
PROJECT NUMBER	1524
DRAWING NUMBER	013-10
REV	1
SHEET	1 OF 1