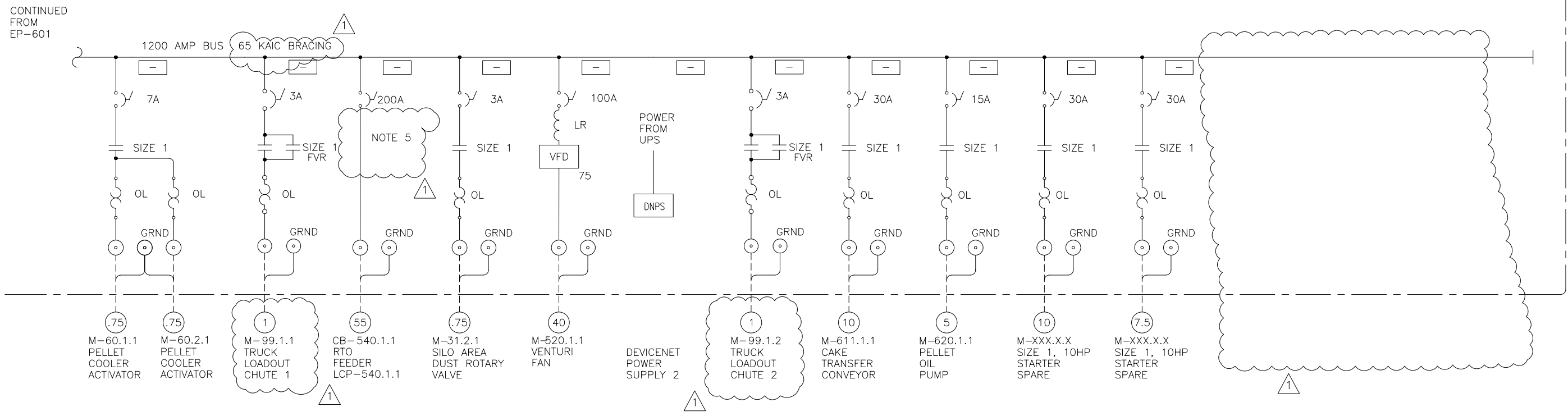


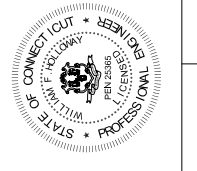
MCC-1

CONTINUED FROM EP-601



NOTES:

- 1) OVERLOADS ARE SMP-1 SOLID STATE, CLASS 20, MANUAL RESET, UNLESS NOTED OTHERWISE.
- 2) E3 PLUS OVERLOAD WITH CURRENT MONITOR.
- 3) LINE REACTORS ARE 5%.
- 4) ALL MCC CIRCUIT BREAKERS SHALL BE HMCP TYPE OR EQUAL UNLESS OTHERWISE NOTED
- 5) CIRCUIT BREAKER TO BE THERMAL MAGNETIC
- 6) OVERLOADS & CIRCUIT BREAKER SIZES TO MANUFACTURERS RECOMENDATIONS



DATE:	12/27/05
FILE:	1524-EP602
SCALE:	NONE
SIZE:	DDS40
DATE:	10/18/06
DATE:	06/05/06
DATE:	2/21/06
REV:	0
REV:	B
REV:	

JOB NAME:	CITY OF STAMFORD CONNECTICUT SOLIDS DRYING PROJECT
TITLE:	MCC ONE LINE DIAGRAM, SHEET 2 OF 2
PROJECT NUMBER:	1524
DRAWING NUMBER:	EP-602
REVISION:	1
SHEET:	2 OF 2

THIS DRAWING IS A TRADE SECRET AND ONLY ENTRUSTED TO THE RECEIVER FOR HIS PERSONAL USE. WITHOUT THE SIGNED WRITTEN CONSENT OF ANDRITZ-RUTHNER, INC., IT MUST NOT BE COPIED NOR MADE AVAILABLE TO THIRD PARTIES. INCLUDING COMPETITORS, NOR MADE ACCESSIBLE TO SUCH PARTIES. ANY ILLEGAL USE BY THE RECEIVER OR THIRD PARTIES FOR WHICH HE IS RESPONSIBLE CAN CONSTITUTE A CAUSE FOR LEGAL ACTION. THIS DRAWING MUST BE RETURNED ON REQUEST OF THE COMPANY.

RELEASED 12/08/06
REVISION

